



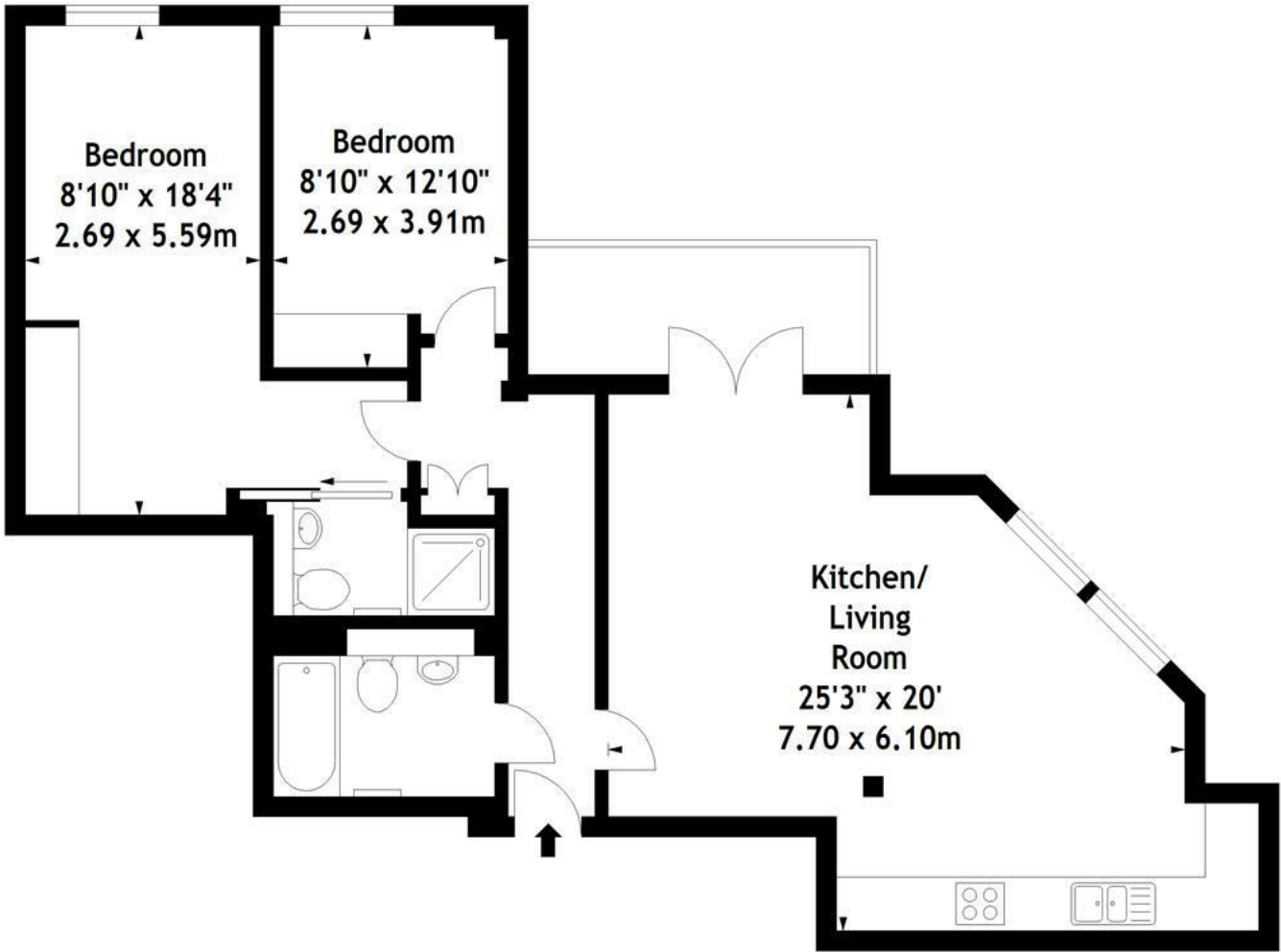
Belmont Terrace, London, W4 5UG

A spacious modern apartment, centrally located close to numerous amenities, benefiting from a sunny balcony with far-reaching views. The property forms part of a boutique development of 15 apartments with the flat located on the second floor (with lift access). The accommodation comprises a bright and spacious reception room, a fully integrated open-plan kitchen, principal bedroom with luxury ensuite, second double bedroom, spacious bathroom, private balcony, extensive built-in storage, underfloor heating, oak flooring, video entry phone, automatic lift, covered secure parking space (if not required £2850pcm). Superb location, 2 minutes walk to Chiswick High Road's shops, cafes and restaurants and close to Chiswick Park and Turnham Green tube stations. EPC-C. Hounslow Council Band F. The flat is available furnished/part furnished from 20th May.

- Lovely central location in the heart of Chiswick
- Two beds/two baths
- Private balcony
- Spacious reception with open plan kitchen
- Offered furnished/part furnished
- Available 20th May
- Private gated parking space included (if not required £2850)

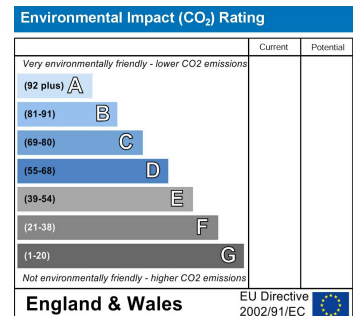
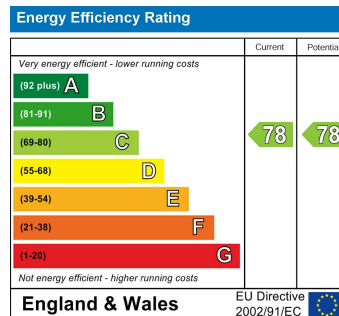
£3,000 Per Calendar Month

Apartment 10
Merlin House,
Belmont Terrace, W4
Approx. Gross Internal Area
812 Sq Ft - 75.47 Sq M



Second Floor

This plan is for layout guidance only. Not drawn to scale unless stated.
Windows & door openings are approximate. Whilst every care is taken in the preparation of
this plan, please check all dimensions, shapes & compass bearings before making any
decisions reliant upon them.



5-7 Turnham Green Terrace, Chiswick, London, W4 1RG
Tel 020 8747 8800

E-mail lettings@whitmanandco.com
Website www.whitmanandco.com